



# PRODUCTS & SERVICES



| A **PRECISION BUILD** company

A low-angle, upward-looking shot from inside a large, circular industrial tank under construction. The ceiling is composed of numerous dark, heavy steel beams radiating from a central point, creating a starburst pattern. A large, circular skylight in the center allows bright sunlight to stream in, casting long, sharp shadows of the beams onto the floor. The floor is a smooth, light-colored concrete. In the lower right corner, a red scissor lift is partially visible, with the text 'United Rentals' and the number '11150011' on its side. The overall atmosphere is industrial and dramatic due to the high contrast of the light and shadows.

# PRECISION TANK

## Liquid Storage Solutions

Providing a full range of premier stainless steel tanks, mild steel tanks, fiberglass tanks and construction services, Precision Tank is an industry leader that offers innovative storage solutions.

Innovate. Fabricate.

# TABLE OF CONTENTS

## SHOP BUILT TANKS & APPLICATORS

Fiberglass Tanks . . . . .	4
Stainless Steel Tanks . . . . .	6
Applicator and Small Nurse Tanks . . . . .	6
Large Nurse Tanks . . . . .	7
Double Conical Tanks . . . . .	7
Bulk Chemical Tanks . . . . .	8
Large Storage Tanks . . . . .	9
Chemical Weigh Tanks . . . . .	9
N-Serve Storage Tanks . . . . .	10
Mini-Bulk N-Serve Tanks . . . . .	10
Mild Steel Tanks . . . . .	11
Flat Bottom Vertical Storage Tanks . . . . .	11
Cone Bottom Vertical Storage Tanks . . . . .	12
Applicators and Equipment . . . . .	13
Nurse Trailer and Tank . . . . .	13
Nurse Units . . . . .	14
Pickup Units . . . . .	14
Service and Repair . . . . .	15
Parts and Accessories . . . . .	16
Online Parts Store . . . . .	17

## LIQUID STORAGE CONSTRUCTION

Piping and Plumbing . . . . .	19
Field Erected Tanks . . . . .	20
Design and Budget . . . . .	21
Project Management . . . . .	21
Buildings . . . . .	21
Secondary Containment . . . . .	22
Automation Systems . . . . .	23
Repair and Inspection . . . . .	23
Case Studies . . . . .	24
Precision Build Companies . . . . .	27
Locations & Contact Information . . . . .	Back Cover



# SHOP BUILT TANKS & APPLICATORS

## Premier Fiberglass Tanks, Stainless Steel Tanks, Mild Steel Tanks, Applicators and Parts

Precision Tank is in its seventh decade of serving agribusiness and industry. Our company's tradition of excellence has been our guiding force, and will continue to be the standard by which we judge our products, our people and our service.

Precision Tank, headquartered in Springfield, IL, fabricates a full range of stock and custom fiberglass tanks, stainless steel tanks, mild steel tanks, nurse tank/trailer units, applicators, and equipment for agriculture and industrial markets.

# FIBERGLASS TANKS

With a unique manufacturing process and high quality materials, Precision Tank fiberglass is unmatched in strength and tank life.

## Features and Options

Fiberglass tanks are designed to eliminate the effects of fertilizer and chemical corrosion, providing long-term performance. All Precision Tank fiberglass tanks come with a 3-year warranty.

- Isophthalic polyester resin is used throughout our standard tanks. Vinyl ester resin is also offered for harsh environmental storage installations, and likewise is used throughout all tank layers.
- The final gel coat exterior has the best resistance to ultraviolet light, and will last the entire tank life – no more repainting like mild steel tanks.
- 24" manhole and cover is standard on all tanks.
- 3", 4" or 6" outlets are available, depending on tank size, customer requirements and piping layout.
- Fiberglass tanks are 60% lighter and have a higher strength-to-weight ratio than steel tanks.
- Due to increased longevity and low maintenance, fiberglass tanks are more cost effective than steel tanks.
- Internal slope bottom tanks available.

### Available Sizes

15,000 gallons

20,000 gallons

25,000 gallons

30,000 gallons

*Internal slope bottoms available on all tank sizes  
Capacities shown are nominal/industry standard*

### Precision Tank Advantages

- Design Meets ASTM D3299 Standards
- On-site delivery included
- Helical winding for added strength



Helical Winding



Custom Tops/Bottoms

## Layers of Quality

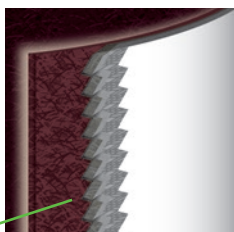
Fiberglass tanks are constructed of four layers to provide long lasting durability and corrosion resistance from the innermost veil to the outer UV coating.



Dome tops add to the overall strength of the tank.

24" manholes and covers are standard on all tanks.

3", 4" and 6" outlets are available, depending on customer requirements.

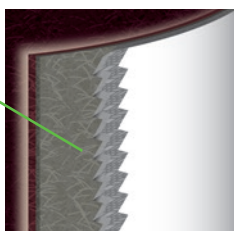


### 1 | VEIL

90% Resin

10% Veil

The blend of resin and veil provide the first line of defense against chemical migration in the inner section of the corrosion layer.

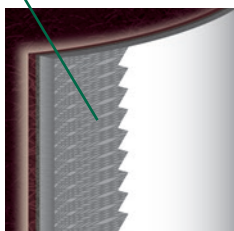


### 2 | CHOP

70% Resin

30% Glass

A combination of resin and glass create the outer section of the corrosion layer. Tanks are manufactured with high quality raw materials at industry standards for superior reliability.

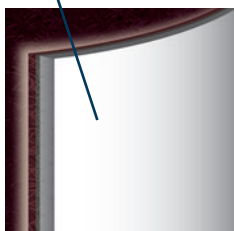


### 3 | STRUCTURAL

30% Resin

70% Glass

**CNC controls are used to produce a unique, state-of-the-art helical winding pattern for superior strength.** Isophthalic resin or vinyl ester resin is included in the structural layer to increase resistance to chemical migration for superior tank life.



### 4 | UV GEL COATING

100% UV Resistant Gel Coating

Protects the tank from UV rays and weather. Gel coat is formulated and mixed by the manufacturer for superior quality.

# STAINLESS STEEL TANKS

## APPLICATOR AND SMALL NURSE TANKS

Constructed of type 304 stainless steel with #4 finish, these tanks are designed and built to withstand the rigors of open field use. Optional equipment, such as spargers, etc. are available to create a custom configuration.

### 430 to 630 Gallon Capacity

Tanks come standard with dished heads, stainless steel weld-on skid, V sump with outlet, 16" manhole with 10" quick opening, 2" stainless steel vent opening, 1-1/2" sight gauge with capacity chart and polished weld seams.

Model	Capacity	Dimensions	Shell
SS-43-A	430 gal	44" x 60" x 74"	14 ga
SS-52-A	520 gal	44" x 72" x 86"	14 ga
SS-54-A	540 gal	48" x 60" x 76"	14 ga
SS-63-A	630 gal	44" x 90" x 104"	14 ga

**NOTE:** Free pickup for stainless steel nurse and chemical tanks (up to 96" diameter) is available at our Midwest production locations of Virginia, IL; Humboldt, IA; and Ligonier, IN.

#### Optional Equipment

- 2" S/S Removable Sparger
- 1-1/2" S/S Rinse Sparger
- 360° Rinse Ball Nozzles
- S/S Ladder
- Automatic Shut-Off Valve on Sight Gauge

S/S – Stainless Steel

### 1,000 to 2,000 Gallon Capacity

Tanks come standard with dished heads, 16" manhole with 10" quick opening fill, 3" stainless steel vent opening, 10 ga or 3/16" stainless steel weld-on skid, 96" or 120" V sump with 3" outlet through to skid, 1-1/2" sight gauge with capacity chart and polished weld seams.

Model	Capacity	Dimensions	Baffles	Shell
SS-100-U	1,000 gal	48" x 120" x 135"	1	14 ga
SS-128-U	1,280 gal	54" x 120" x 137"	1	12 ga
SS-155-U	1,550 gal	60" x 120" x 137"	1	12 ga
SS-180-U	1,800 gal	60" x 144" x 161"	2	12 ga
SS-200-U	2,000 gal	60" x 156" x 173"	2	12 ga

Capacities shown are nominal/industry standard



#### Optional Equipment

- S/S Flush Tanks – 60 or 100 gal
- 2" S/S Removable Sparger
- 1-1/2" Rinse Sparger
- 360° Rinse Ball Nozzles
- S/S Ladder
- 4" Outlet Upgrades
- Mounting Kit with Brackets/Springs
- 96" S/S Catwalk/Fenders
- Automatic Shut-Off Valve on Sight Gauge

# LARGE NURSE TANKS

Tanks come standard with dished heads, 16" manhole with 10" quick opening, 3" stainless steel vent opening, 3/16" heavy duty stainless steel weld-on skid, V sump with 3" outlet through skid, 1-1/2" sight gauge with capacity chart and polished weld seams.

Model	Capacity	Dimensions	Baffles	Shell
SS-245-U	2,450 gal	66" x 156" x 176"	2	12 ga
SS-315-U	3,150 gal	72" x 168" x 190"	2	12 ga
SS-330-U	3,300 gal	72" x 180" x 202"	2	12 ga
SS-350-U	3,500 gal	72" x 192" x 214"	2	12 ga
SS-370-U	3,700 gal	72" x 204" x 226"	3	12 ga
SS-420-U	4,200 gal	72" x 228" x 250"	3	12 ga
SS-480-U	4,800 gal	72" x 258" x 280"	3	12 ga
SS-500-U	5,000 gal	72" x 276" x 298"	3	12 ga
SS-520-U	5,200 gal	72" x 288" x 310"	4	12 ga

Capacities shown are nominal/industry standard



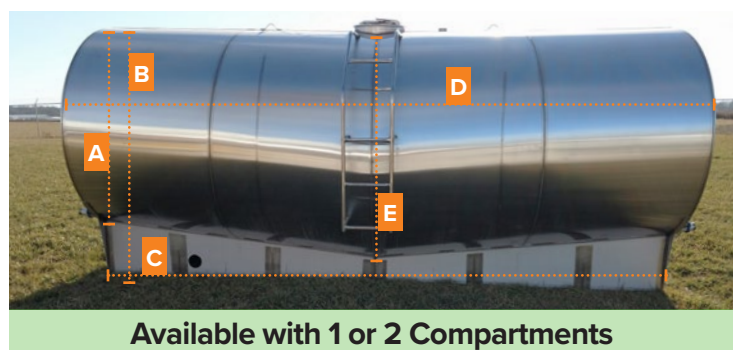
## Optional Equipment

- S/S Flush Tanks – 60 or 100 gal
- 2" S/S Removable Sparger
- 1-1/2" S/S Rinse Sparger
- 360° Rinse Ball Nozzles
- S/S Ladder
- Multiple Compartment Plumbing
- 4" Plumbing Upgrade
- Mounting Kit with Brackets/Springs
- 120" S/S Catwalk/Fenders
- Safety Platform
- Additional Manways
- Automatic Shut-Off Valve on Sight Gauge

# DOUBLE CONICAL TANKS

Double conical tanks are equipped with the following fittings and assembly — 1-1/2" sight gauge fittings with sight gauge strips; 2" stainless steel sparger tube installed with dresser couplers; 3" outlet through to skid; 3" vent opening; two lifting lugs; stainless steel ladder; 16" stainless steel manway with flip-top 10" fill; 3/16" stainless steel skid; 1/2 V sump.

Model	Type 304 Stainless Steel – Dimensions						
	A	B	C	D	E	Shell	Head
2,400	60"	78"	162"	181"	68"	12 ga	12 ga
3,200	66"	84"	180"	204"	76"	12 ga	12 ga



## Optional Equipment

- S/S Flush Tanks – 60 or 100 gal
- 1-1/2" S/S Rinse Sparger
- 360° Rinse Ball Nozzles
- Additional S/S Ladder
- 2 Compartment Plumbing
- 4" Plumbing Upgrade
- Mounting Kit with Brackets/Springs
- S/S Catwalk/Fenders
- Safety Platform
- Automatic Shut-Off Valve on Sight Gauge

# BULK CHEMICAL TANKS

Vertical storage tanks are available in either cone bottom (CB), flat bottom (FB), or slope bottom (SB). Chemical storage tanks are also available in horizontal (HZ) designs.

All chemical storage tanks are constructed of 304 alloy stainless steel or 316 alloy with a 2B finish, and manufactured with openings and fittings as specified by the customer. Included is a 2" stainless outlet pipe to the side, and two recirculation ports.

## 1,100 to 12,000 Gallon Capacity

Model	Capacity	Dimensions	Shell
CB-1100	1,100 gal	58" x 96" x 120"	14 ga
CB-1600	1,600 gal	70" x 96" x 120"	14 ga
CB-2200	2,200 gal	82" x 96" x 120"	14 ga
CB-2400	2,400 gal	70" x 144" x 168"	14 ga
CB-2940	2,940 gal	94" x 96" x 120"	14 ga
CB-3000	3,000 gal	70" x 180" x 204"	14 ga
CB-3650	3,650 gal	94" x 120" x 144"	12 ga
CB-4300	4,300 gal	94" x 144" x 168"	12 ga
CB-5100	5,100 gal	94" x 168" x 192"	12 ga
CB-6100	6,100 gal	94" x 204" x 228"	12 ga
CB-8000	8,000 gal	94" x 264" x 288"	10 ga
CB-10,000	10,000 gal	142" x 144" x 168"	10 ga
CB-12,000	12,000 gal	142" x 180" x 204"	10 ga

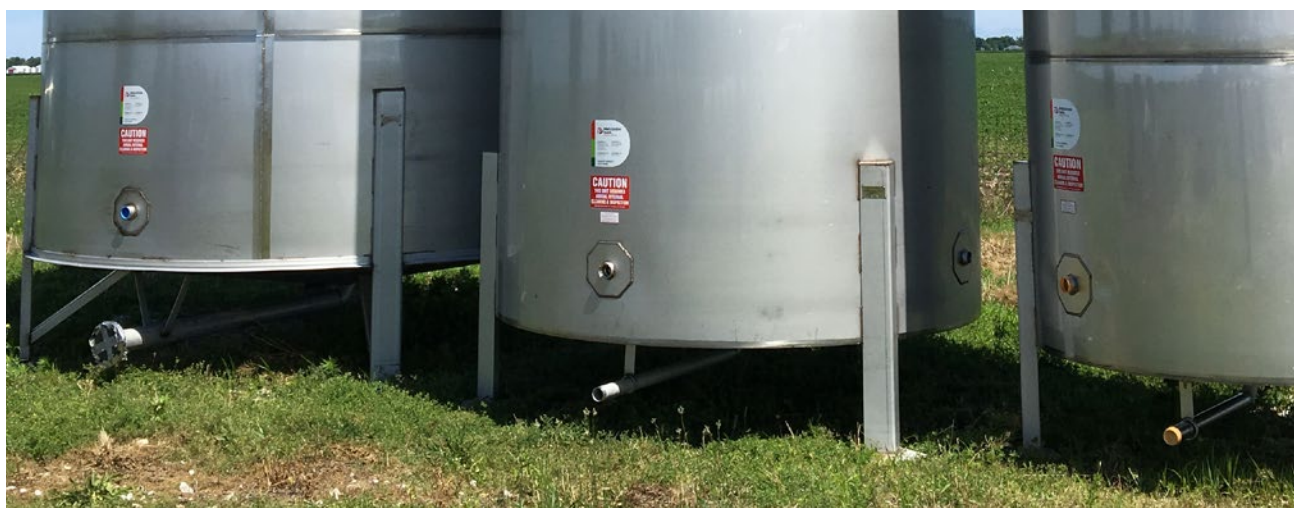
Capacities shown are nominal/industry standard

### Standard Equipment

- 2" S/S Outlet Pipe to Side of Tank
- 20" or 16" S/S Hinged Manway
- 2" S/S Vent Outlet
- S/S Legs with Footpads
- (2) Recirculation Ports
- 2" S/S Threaded Opening on Top (Spare)

### Optional Equipment

- Internal Eductors
- Mechanical Vent



# LARGE STORAGE TANKS

Large vertical stainless steel storage tanks are available in capacities of 12,000-30,000 gallons with a flat bottom design. Slope bottom and cone bottom designs are available upon request.

Constructed of 304 stainless steel or 316 alloy stainless steel with an HRAP finish and manufactured with openings and fittings as specified by the customer.

## 12,000 to 35,000 Gallon Capacity

Model	Capacity	Diameter	Height
SS FB-12	12,000 gal	12'	15'
SS FB-15	15,000 gal	12'	18'
SS FB-20	20,000 gal	12'	24'
SS FB-25	25,000 gal	12'	29'
SS FB-30	30,000 gal	12'	35'
SS FB-35	35,000 gal	12'	42'

*Capacities shown are nominal/industry standard*

### Standard Equipment

- 3" Outlet
- 3" Vent Opening
- 1" Sight Gauge Opening
- 20" Bolted Cover Manhole in Shell

### Optional Equipment

- Ladder and/or Guardrail Assembly
- Sight Gauge Kit
- 4" or 6" Outlets
- 24" Manhole with Davit Assembly



# CHEMICAL WEIGH TANKS

Precision Tank's chemical weigh tanks are made of stainless steel, with an optional stainless steel water rinse ring. The weigh tank's physical size adapts to a platform scale, allowing you to capture weights of solutions without making another major equipment investment. The low profile facilitates adding crop protection by jugs, if desired. Our smooth cone bottom design aids in clean-out. Weigh tanks can be outfitted with water flush and air blow out optional equipment. These tanks can be modified to work with common agronomy software packages. Custom sizes and 1/2 hinged lids are also available.

## 60 to 250 Gallon Capacity

Model	Capacity	Dimensions
CWT-60	60 gal	36" x 11" x 33"
CWT-80	80 gal	36" x 16" x 38"
CWT-120	120 gal	42" x 16" x 38"
CWT-150	150 gal	42" x 22" x 44"
CWT-200	200 gal	48" x 24" x 46"
CWT-250	250 gal	48" x 30" x 52"



# N-SERVE® STORAGE TANKS

Ideal for storing N-Serve, DEF, acetone and other flammable products, Precision Tank's Vertical Bulk N-Serve Tanks are built to UL-142 specifications, and carry the Underwriters Laboratories Label. They have a flat bottom design, are fabricated of type 304 stainless steel material with a 2B finish and are welded internally and externally.

## Stainless Steel Vertical Flat Bottom Tanks

Model	Capacity	Dimensions
NS-FB 24	2,400 gal	70" x 144"
NS-FB 30	3,000 gal	70" x 180"
NS-FB 43	4,300 gal	94" x 144"
NS-FB 50	5,000 gal	94" x 168"
NS-FB 61	6,100 gal	94" x 204"
NS-FB 100	10,000 gal	132" x 168"

*Capacities shown are nominal/industry standard*

### Included Fittings

- (2) 2" S/S Flanged Outlets
- (1) 3" S/S Coupling in Top
- (1) 2" S/S Coupling in Top
- (1) 20" S/S Manway in Top
- Emergency Vent Opening to UL-142 Specifications
- (2) S/S Lift Lugs

# MINI-BULK N-SERVE® TANKS

Precision Tank's Mini-Bulk N-Serve Tanks are fabricated of 2B finish 304 stainless steel, meet UN Packing Group II, DOT 49 CFR specifications and are EPA compliant.

Rated for 11 pounds per gallon material, these round tanks are built with dished heads in the top and bottom for strength.

Standard specifications include a 16" stainless steel manway with 10" flip top opening, 2" pressure vacuum vent, 2" bottom outlet with valve, dry break and a one way check valve. The bottom outlet is centered in the dished head for maximum drainage and easy cleaning.

Mini-Bulk N-Serve tanks are welded internally and externally. They are stackable and have forklift slots on the bottom and lifting slots in the top rim.

## Type 304 Stainless Steel

Model	Capacity	Dimensions
NS-MB 200	200 gal	44" x 53"
NS-MB 250	250 gal	44" x 60"
NS-MB 300	300 gal	44" x 68"



## MILD STEEL TANKS

# FLAT BOTTOM VERTICAL STORAGE TANKS

Vertical storage tanks are fabricated of A36 low carbon mild steel. We always use this grade of steel while some competitors use cheaper grades. Tanks are available in either flat bottom (FB) or cone bottom (CB) design and are welded internally and externally for maximum resistance to corrosion and weather.

Precision Tank can arrange delivery of your vertical storage tanks upon request. Precision Tank's unique delivery trailer is capable of erecting the tanks on location at your job site.

### 6,000 to 30,000 Gallon Capacity

Model	Capacity	Diameter	Height	Bottom	Shell	Top
SFB-6	6,000 gal	8'	16'	1/4"	3/16"	3/16"
SFB-10	10,000 gal	11'	14'	1/4"	3/16"	3/16"
SFB-12	12,000 gal	11'	17'	1/4"	3/16"	3/16"
SFB-15	15,000 gal	12'	18'	1/4"	3/16"	3/16"
SFB-20	20,000 gal	12'	24'	1/4"	3/16"	3/16"
SFB-25*	25,000 gal	12'	29'	1/4"	1/4"	3/16"
SFB-30**	30,000 gal	12'	35'	1/4"	1/4"	3/16"
SFB-30Q***	30,000 gal	12'	35'	1/4"	All 1/4"	3/16"

*Capacities shown are nominal/industry standard*



#### Included Fittings

- (1) 3" Type 304 S/S Outlet
- (1) 18" Bolted Cover Manhole in Shell
- 1" Sight Gauge Openings
- (1) 3" Vent Opening in Top Center
- (4) Hold Down Lugs
- Painted Rust-Resisting Primer

#### Optional Equipment

- Ladder and/or Guardrail Assembly
- Sight Gauge Kit
- 4" or 6" Outlets
- 24" Manhole with Davit Assembly

\* First shell course is 1/4" and the balance of the shell courses are 3/16".

\*\* First two shell courses are 1/4" and the balance of the shell courses are 3/16".

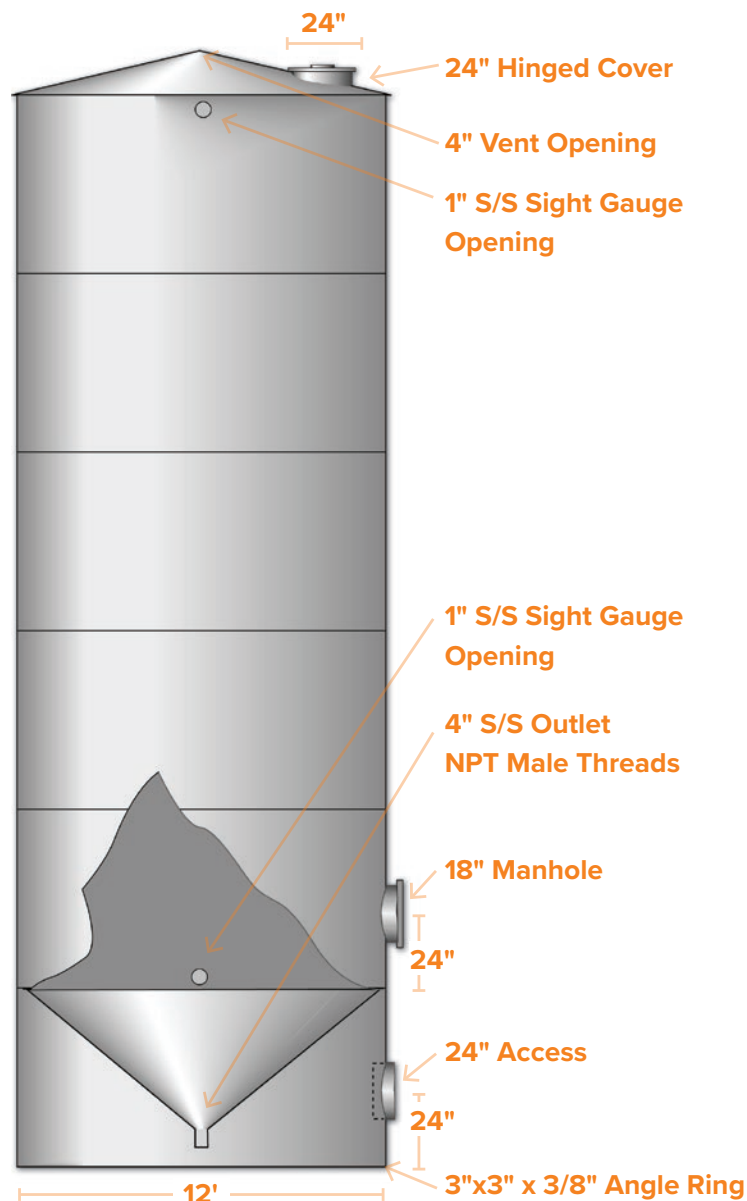
\*\*\* All shell courses are 1/4".

# CONE BOTTOM VERTICAL STORAGE TANKS

11,650 to 25,200 Gallon Capacity - Mild or Stainless Steel

Capacity	Diameter	Height	Cone Bottom	Shell	Skirt
11,650 gal	12'	19'	1/4"	3/16"	1/4"
15,800 gal	12'	24'	1/4"	3/16"	1/4"
20,100 gal	12'	29'	1/4"	1/4"**	1/4"
25,200 gal	12'	35'	1/4"	1/4"**	1/4"

Capacities shown are nominal/industry standard



## Included Fittings

- (1) 4" Threaded Outlet
- (1) 18" Bolted Cover Manhole in Shell
- 1" Sight Gauge Openings
- (1) 4" Vent Opening in Top Center
- 24" Access Opening in Skirt
- Painted Rust-Resisting Primer on Mild Steel Tanks

## Optional Equipment

- Ladder and/or Guardrail Assembly
- Sight Gauge Kit
- 4" or 6" Outlets
- 24" Manhole with Davit Assembly

\* The first course of shell is constructed of 1/4" steel for strength, the balance of the shell courses use 3/16" steel.



# APPLICATORS AND EQUIPMENT

## NURSE TRAILER AND TANK

Let Precision Tank build a custom nurse unit and trailer to meet your specific needs with options for single compartment, double compartment, double conical and NEW vertical EZ-Clean tanks. Tank sizes range from 1,000 to 5,200 gallons, with trailers up to 60,000 lbs. GVWR.



2,400 Gallon Double Conical, 2 Compartment



1,300 Gallon Vertical EZ-Clean



5,200 Gallon, 2 Compartment



Safety Platform



1,550 Gallon, Single Compartment

### Included Features

- Gas Engine Driven 3" Pump
- Tank Rinse Nozzles
- 2" Agitation Line
- 3" Fill
- 3" Unload

### Optional Equipment

- 3" Hose Reel with 50' Hose
- Fresh Water or Chemical Tanks
- Extra Manholes for Easy Access
- Hydraulic Driven Pump
- Safety Platform

# NURSE UNITS

Applicators are designed to apply fertilizer and chemicals in the field. Wasted time, reduced profits, and increased wear and tear result when applicators are on the road hauling product or returning to the plant to reload. Precision Tank can assist in designing and manufacturing a nurse unit to your exact specifications, with payload to meet your needs.



## Features and Options

- Single Compartment Tank
- Multiple Compartment Tank
- Stainless Steel Tank Skid
- Stainless Steel Catwalks
- Stainless Steel Plumbing
- Flush Tanks
- Your Choice of Plumbing Size
- Your Choice of Pump Drive & Size
- Tank Mounted on Trailer or Chassis

# PICKUP UNITS

For more than 30 years, Precision Tank has been a leader in manufacturing application equipment, including pickup chassis units. Our builds have stood the test of time and we proudly offer the best pickup applicators on the market.

Units are fully customizable to meet your specific needs for liquid or dry application. Call us today and let us design a custom unit for you.



## Features and Options

- Ford F550 Chassis
- 19,500# GVWR
- 6.7 Liter Turbo Diesel
- Automatic Transmission
- Up to 640 Gallon Stainless Steel Tank
- Stainless Steel Fresh Water Tank
- Stainless Steel Hydraulic Tank
- Up to 60 Foot Boom System
- New Leader Dry Bed Built to Spec
- Multiple Wheel & Tire Packages Available

# SERVICE AND REPAIR

Precision Tank employs a staff of professionals that have the experience to service and repair our complete line of equipment. So when you need service or repair, put the Precision Tank professionals to work for you!

**Schedule your service and repair today**  
**Call 800 811 7814**



**We offer repair service and replacement parts for most major lines of agriculture pumps including:**

- Ace
- Banjo
- Blackmer
- Corken
- Defco
- Dura
- Everflo
- MP- Gardner Denver
- Hypro
- John Blue
- Pacer
- Scot
- Verti Flo



**Make Precision Tank your first call  
for replacement Defco parts and pumps!**

# PARTS AND ACCESSORIES

Precision Tank stocks a complete line of fertilizer related accessories, replacement and repair parts. Over 9,000 different parts are held in our inventory, ready for immediate shipment.

**Shop for parts online at: [shop.precisiontank.com](http://shop.precisiontank.com)**

**Order parts by phone at: 800 811 7814**

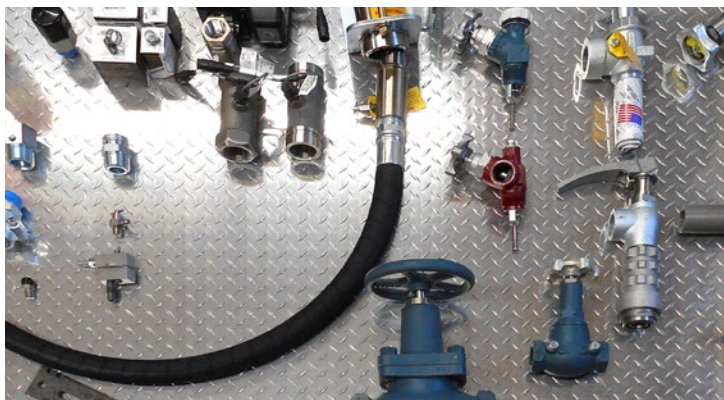
## Liquid Applicator Parts

We carry parts for all lines of liquid applicators, tanks and mixers.



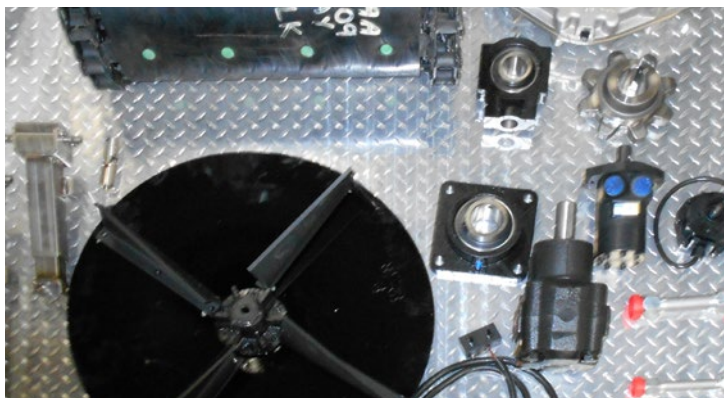
## Anhydrous Ammonia Parts

Precision Tank carries a complete line of anhydrous ammonia parts.



## Dry Bed Parts

Precision Tank carries a full line of New Leader parts.



# ONLINE PARTS STORE

**BROWSE AND ORDER OUR FULL INVENTORY OF PARTS ONLINE**

**Shop online at: [shop.precisiontank.com](http://shop.precisiontank.com)**

**Order by phone at: 800 811 7814**

Shop thousands of ready to ship parts for fertilizer and chemical applications 24/7 from your computer or device on our online parts store. Have a question? Call us at 800 811 7814 during business hours and our knowledgeable staff can help you select the right part.

Orders placed before 3:00 p.m. CST on business days ship same day from one of our two Illinois locations via US Mail - UPS - Truck or Air. Overnight service available, if needed.



# LIQUID STORAGE CONSTRUCTION

## The Leader in Design and Construction of Liquid Fertilizer Terminals

Precision Tank offers construction services for field erected tanks and liquid storage facilities.

Drawing on years of industry knowledge, we efficiently manage every aspect of the liquid storage project from planning and budgeting to construction and installation.

To ensure quality that meets our high standards and projects that stay on schedule, we have our own full time, trusted construction and plumbing crews.

# PIPING AND PLUMBING

Precision Tank has years of experience with fertilizer and chemical plumbing installations. We provide innovative designs and install plumbing for overhead structures, load-ins/load-outs, semi truck hookups, rail-car hookups, barge hookups, mixers, blenders and various automation applications.

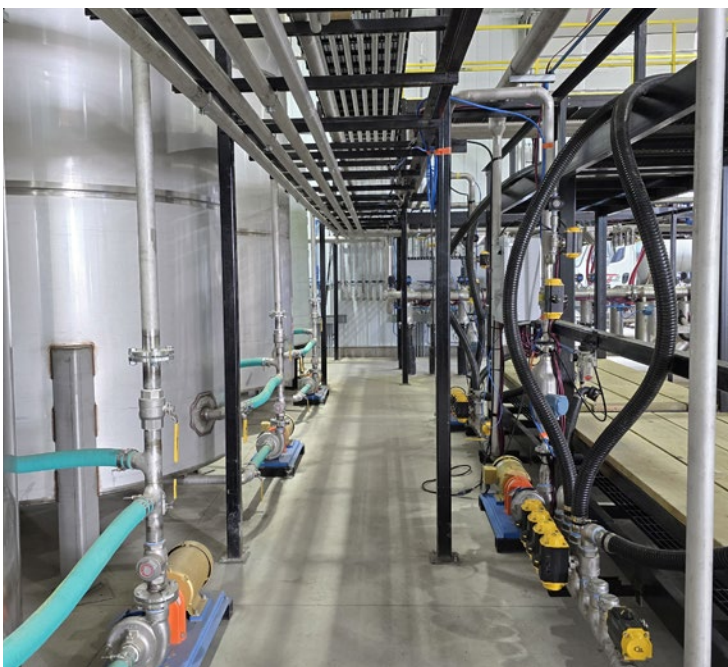
We use our own full time piping and plumbing crews to ensure the project is done right and done on time.

Installations have been constructed with stainless steel piping, carbon steel piping, and High Density Polyethylene (HDPE) piping and are designed to meet each customers unique requirements. We can assist you with any pumps, motors and fittings or connections to achieve the maximum input and output of any liquid applications that you would require.



## Field Services

- Stainless Steel Piping
- Carbon Steel Piping
- HDPE – High Density Polyethylene (Drisco)
- Pumps and Motors
- Fittings and Connections



## Shop Fabrication Services

- Catwalks and Steps
- Pipe Chase
- Work Platforms
- Strainers – Heavy Duty
- Venturi

**Piping and plumbing is completed by our own, experienced crews.**

# FIELD ERECTED TANKS

Precision Tank specializes in welded above ground steel tanks used for storage of liquid fertilizer, fuel, water, chemicals and other bulk commodities.

We offer field erected tanks from 100,000 gallons up to 5,000,000 gallons to meet our customers' needs. Our tanks meet or exceed API 650 Standards and have increased sidewall thickness, extra heavy rafter systems and superior in-tank recirculation (sparge) systems.

Along with building new tanks, we also clean, inspect, test and repair existing tanks to API 653 standards.



## Field Services

- Field Erected Tanks: 100,000-5,000,000 Gallon
- Mild Steel FET
- Stainless Steel FET
- Tank Liners
- Double Wall Tanks
- Tank Repairs
- Tank Retrofits



**Dedicated construction crews are on staff to ensure projects are done right and done on time.**



# DESIGN AND BUDGET

A successful project begins with good planning. Drawing on years of industry knowledge, we can craft an innovative design and balanced budget around your unique requirements. Our internal design team avoids unnecessary outside consultants.



## Services

- Facility Planning and Specs
- Process System Evaluation
- Piping and Pump System Design

# PROJECT MANAGEMENT

Constructing a liquid terminal is a complex project. Precision Tank can manage the process for you from start to finish, including subcontractors, if required, so everything is completed as planned while you focus on running your business.

# BUILDINGS

We can design and manage the construction of buildings to house liquid storage terminals. With energy efficient, solid core panel options from EPS Structures, steel frame buildings from Behlen Buildings or wood frame buildings, the facility can be built to meet your specific needs.



## Solid Core Construction

Energy efficient, solid core panel construction from EPS Structures.

Structural Insulated Panels (SIPs) join high-performance rigid foam insulation to Oriented Strand Board (OSB) or plywood.

Precision Tank uses R-33 panels with fiberglass reinforced panel (FRP) interior facings.

## Steel Frame Buildings

We are a dealer for Behlen Buildings.

# SECONDARY CONTAINMENT

## Tank with Liner

A PVC membrane is placed inside the tank, which becomes the primary containment for the liquid; with the rigid tank being the secondary containment with mechanical leak detection ports. Installation is done utilizing OSHA Compliant trained crews and the latest methods of attachment and compression sealing of all inlets and outlets to your tank.

With proper care and maintenance, life expectancy can be 10-15+ years in 28% and 32% nitrogen service and 10-34-0 service.

This lining system is approved by most state departments of agriculture. Once scheduled, a lining system can normally be installed in less than seven days.

## Tank in a Tank

Recommended for areas with limited space, these space-saving tank packages have two floors and two walls, but share the same roof. You also do not have to monitor and pump rain water out of the containment area.

## Earthen Containment

One of the most common applications, dirt is excavated from the secondary containment location and used to build berm walls, forming a pooling area or containment dike. A liner system is then added to the containment floor and berm walls.

## Steel Containment

Similar to earthen containment, the area is excavated. After it is leveled and compacted, reinforcement posts and corrugated steel sheets are installed to create the containment area. Corrugated steel walls can be shaped to specific configurations to save valuable room. A liner system is installed to cover the floor and walls.



# AUTOMATION SYSTEMS

We can arrange the installation and configuration of automation systems through the supplier of your choice.



## REPAIR AND INSPECTION

### Inspection and Testing

After cleaning, a visual inspection is done of the tank. Any areas of concern are documented and supplied to the customer with our recommendations for repair. If a more thorough inspection is required, vacuum box, leak penetrant, and radiographic testing are available.

### Repair

Repairs are made to meet or exceed API 653 Standards. Examples of common repairs are pitting areas, corroded welds, corroded steel and compromised areas.

If there are areas of concern in the tank floor or sidewall, depending on the condition, a coating may be applied instead of replacing it. The area is sandblasted and thoroughly cleaned, the coating is then installed over the entire tank floor and a portion of the sidewall or the entire sidewall depending on customer preference.

### Services

- Tank Cleaning
- Regulatory Compliance
- Industry Standards Compliance
- Storage Tank Inspections
- Piping Inspections
- Lining and Coating Inspections





# CASE STUDY

## Cedar County Coop – Tipton, IA

### Their Needs

To replace an existing one bay facility with a state of the art fertilizer hub that is designed for future growth.

### Our Solution

Replumbed two existing field erected tanks, erected a new 1,000,000 gallon FET and built a new four bay building designed for speed, accuracy and future expansion.

<b>Facility</b>	
<b>Total Square Feet:</b> 30,000	
<b>Containment System:</b> Liner & concrete dike	
<b>Building:</b> Steel frame	
<b>Liquid Fertilizer</b>	
<b>Liquid Fertilizer Storage Capacity:</b> 8,300 tons Replumbed two existing FET tanks and constructed a new 75x32 ft FET with internal bladder	
<b>Inline Meters</b> Load-out in Bay #1, #2, #3, fertilizer receiving in Bay #4	
<b>Crop Protection</b>	
<b>Bulk Chemical Storage Capacity:</b> 120,000 gallons with 10,800 square feet flat storage for packaged goods.	
<b>Repack:</b> Hot load on all three main lines, repack of chemicals into totes.	<b>Automation:</b> Kahler Automation
<b>Bays #1 &amp; #3 have a SS Venturi installed for dry products and hand adds</b>	



# CASE STUDY

## Cooperative Farmers Elevator – Hawarden, IA

### Their Needs

This facility was designed for the future, with minimal hands on for the workers plus speed and accuracy for CFE's customers.

### Our Solution

A new fertilizer and crop protection hub with two load-out bays and 1.5 million gallon FET that is built for future growth and adding product lines.

#### Facility

**Total Square Feet:** 12,000 (80x150)

**Containment System:** Concrete dike

**Building:** Ladder frame

#### Liquid Fertilizer

**Liquid Fertilizer Storage Capacity:**  
1,500,000 Gallons of UAN Storage – FET  
(5) 30,000 gallon fiberglass tanks  
Outside dike designed for future growth

**Metered Through 2-Mass Meters**  
Hot load in both bays

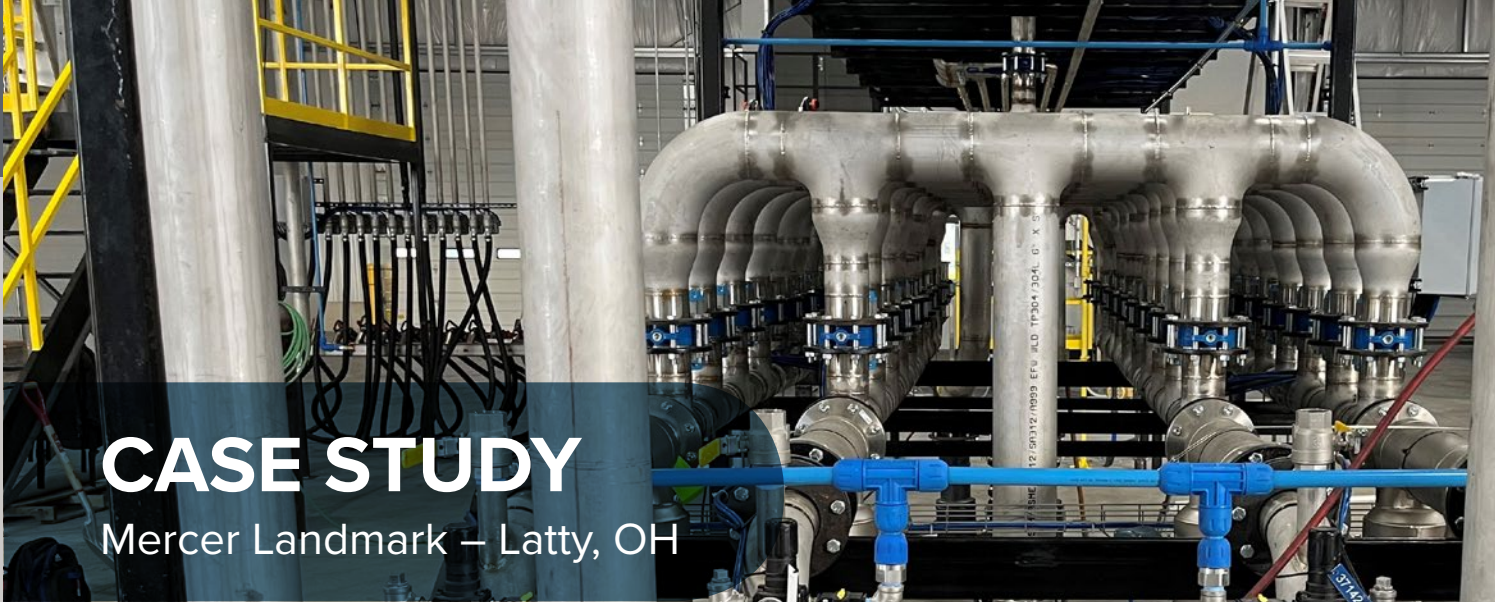
#### Crop Protection

**Bulk Chemical Storage Capacity:** 40,800  
gallons with 20,400 gallons of future expansion

**Repack:** Hanging hoses  
to fill totes with hose reels  
to reach the back of a  
truck in Bay #1

**Automation:**  
Dultmeier/Easy  
Automation





# CASE STUDY

## Mercer Landmark – Latty, OH

### Their Needs

To improve efficiencies and streamline operations to get fertilizer and crop protection products to their customers and surrounding facilities with minimal wait or down times.

### Our Solution

A four bay liquid load out facility with simultaneous load capacity, 24/7 receiving and load out bay, and maximum liquid storage capacity.

Facility	
Total Square Feet: 48,000	
Containment System: Concrete dike; double wall field erected tank	
Building: Steel frame building with security cameras, energy saving motion sense lights, state of the art safety features, and multiple levels of environmental protection	
Liquid Fertilizer	
Liquid Fertilizer Storage Capacity: 1.5 million gallon UAN; 380,000 gallons starter fertilizer; rail-car and truck receiving capabilities	
Tonnage per Year: Current 22,000 tons Potential 150,000 tons	
Tonnage per Day: Current 1,200 tons Potential 7,500 tons	Tonnage per Hour: Current 300 ton Potential 600 tons
Control System/Automation: Kahler Automation	
Crop Protection	
Bulk Chemical Storage Capacity: Twelve bulk chemical tanks; 104,500 gallons	
Packaged Goods Storage: 21,000 sq ft	





# PRECISION BUILD<sup>TM</sup>

## Companies

### Building Together

Precision Build brings together global leaders in liquid storage, structural steel and industrial services. We offer a full range of solutions to help your business thrive.

Precision Tank specializes in piping, mild and stainless steel tanks, fiberglass tanks and field-erected tanks, focusing on agriculture and industrial markets. Tampa Tank fabricates and installs large API/ASME, field-erected steel storage tanks. Florida Structural Steel and Tampa Steel Erecting Company build and install complex, custom structural steel projects such as bridges, cruise terminals, and even large barge shipped steel modules for a wide range of industries.

Precision Build companies share a commitment to safety, service and excellence. Together they offer a strategic advantage by providing business solutions for their customers.

#### Precision Tank

*Precision Tank provides innovative liquid storage solutions for a wide variety of industries, with a particular focus on the agriculture sector.*

#### Florida Structural Steel

*Florida Structural Steel delivers projects and builds solutions for some of the world's most difficult steel fabrication challenges to exacting standards.*

#### Tampa Tank

*Tampa Tank provides complete design, shop fabrication, field erection, inspection and testing of welded steel storage tanks and piping.*

#### Tampa Steel Erecting Company

*TSEC is the latest addition to the Precision Build family. They are known for their expertise in steel bridges and iconic structures such as the Disney Epcot Spaceship Earth geodesic dome.*

# Precision Build Capabilities

## PRECISION BUILD™



*Innovative agricultural liquid storage and piping solutions*



*Design-to-construction of field-erected storage tanks, pressure vessels, and piping*



*Structural steel fabrication for large complex industrial modular steel components and custom projects*



### Storage Tank & Terminal Construction

#### Capabilities & Services

- Design, Engineering & Detailing
- Construction
- Repairs, Maintenance & Modifications

#### Turn-key Terminal Solutions

- Civil
- Structural
- Mechanical
- Foundations
- Insulation
- Coatings
- Electrical

#### Tank & Vessel Applications

- Atmospheric – Shop Built Storage Tanks & Field Erected Storage Tanks
- Low Pressure
- High Pressure
- Process Tanks
- Stacks
- Silos, Bins and Hoppers
- Agitators, Digestors & Clarifiers
- Nurse Tanks
- Bulk Chemical Tanks
- Fertilizer Tanks
- Liquid Automation
- Tanks up to 30 million gallons/ 700,000 barrels

### Industrial Structural Steel

#### Capabilities & Services

- Design & Engineering
- Detailing
- Fabrication
- Inspection
- Metrology & Machining
- Coatings
- Shipment

#### Fabrication Applications

##### Bridge & Highway

- Plate Girders, Tub & Box Girders
- Railroad, Arch, Truss, Cable Stay, Pedestrian, Bascule & Movable Bridges
- Bridge Rehabilitation
- Sign Gantries

##### Aerospace & Energy

##### Hydro & Inland Waterway

##### Space Program Complex Fabrication

##### Department of Defense (DoD)

##### Heavy Steel Structures

- Industrial & Commercial Fabricated Products
- Mooring Dolphins & Berthing Monopiles

##### Modular Piping & Mechanical

- Skids
- Piping & Pipe Racks
- Process Systems



## How We Work

Design and drafting work is prepared in-house to control project details and scheduling. Contracted projects are engineered, procured, fabricated, constructed, inspected, and tested in accordance with specified scope requirements. Committed to total customer satisfaction and project execution, Precision Build delivers unmatched quality and value, safely and on schedule.

### Certifications, Codes & Standards

- AISC Major Bridge with Fracture Critical & Sophisticated Paint Endorsements
- API Standards 620, 650, 653 & 1104
- ASME Code Section IX & Section VIII
- AWS 1.1 & AWS 1.5
- AWWA Standard D100, D102 & D103
- NFPA Standards 22 & 30
- UL Standard 142
- with “U”, “R” & “S” stamps

### Markets & Industries

- Aerospace
- Agriculture
- Bridge & Highway
- Chemical
- Heavy Steel Structures & Infrastructure
- Mining
- Oil & Gas
- Power
- Pulp & Paper
- Renewable Energy
- Water & Wastewater

## Multiple Brands, One Global Leader

With multiple offices and manufacturing locations, Precision Build is strategically positioned to provide expedited, cost-effective delivery options to customers in the US and worldwide.

In Tampa, Florida, Precision Build's direct access to the Port of Tampa, allows for direct, timely shipping worldwide.

In the Midwest, multiple manufacturing locations helps reduce freight costs and lead times for domestic customers.



📍 *Main Offices*

📍 *Manufacturing Facilities*

## **Precision Tank, LLC**

### **Springfield, IL - Main Office**

2935 S Koke Mill Rd  
Suite 100  
Springfield, IL 62711  
**800 258 4197 - Shop Built Tank Sales**

### **Athens, IL - Parts**

25203 Quarry Avenue  
Athens, IL 62613  
217 636 7023  
**800 811 7814 - Parts Sales**

### **Virginia, IL**

PO Box 20  
Virginia, IL 62691  
217 452 7229

### **Humboldt, IA**

2280 16th Ave North  
Humboldt, IA 50548

### **Thompson, IA**

PO Box 257  
Thompson, IA 50478  
**641 584 2900 - Plumbing/FET Sales**

### **Ligonier, IN**

215 Heckner Drive  
Ligonier, IN 46767

**[precisiontank.com](http://precisiontank.com)**

### **Online Parts Store:**

**[shop.precisiontank.com](http://shop.precisiontank.com)**

## **Precision Build Solutions, LLC**

### **Tampa Tank & Florida Structural Steel**

12781 US Hwy 41 South  
Gibsonton, FL 33534  
813 241 4261

### **Tampa Steel Erecting Company**

5127 Bloomingdale Ave  
Tampa, FL 33619

**[precisionbuild.com](http://precisionbuild.com)**



**PRECISION BUILD**<sup>TM</sup>  
Companies